

SPARE PARTS



**DECK BELT
XT 95 CM**
19A1316A603



**DECK BELT V TYPE:
A SEC X 90.95"**
754-05159



**DRIVE BELT V TYPE:
A SEC X 109.90"**
754-05157A



OIL FILTER
KM-023583
(49065-0721)



AIR FILTER
KM-023440
(11013-0727)



BLADES XT 95 CM
19A1328B603



BLADE LEFT
742-05255



BLADE RIGHT
742-05256



SWEEPER 107 CM
190-163A000



STEEL CART
190-223B000



POLY LAWN ROLLER
190-228-000



POLY LAWN ROLLER
190-229-000



**TINE DE-THATCHER
101,6 CM**
190-526-000



SPRAYER 95 L
190-537A000



SPREADER SMALL
196-031B000



SPREADER LARGE
196-036-000



LAWN AERATOR
196-094-000



POLY CART
196-506-000



STEEL CART
196-507-000



**SWEEPER 112 CM
CUB CADET**
196-543-000



SPREADER MEDIUM
196-545-000



HAULER TRAILER
19B40026100R



**HANDLE FOR
HAULER**
19A400270EM



**TOOL HOLDER
FOR HAULER**
19A400300EM



**REAR DEFLECTOR
NX15 -EL. BAG**
196-552A000



**ANTI-DUST SYSTEM
NX15 320L CC**
196-555-603



ELECTRIC BAG LIFT
196-570-600



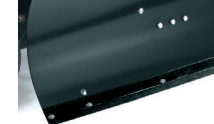
**FRONT SWEEPER
SINGLE**
196-603-000



COLLECTOR
196-604-000



DOZER BLADE
196-606-000



**LIPS FOR RIDER
DOZER BLADE**
196-718-678



**WHEELS
DOZER BLADE**
196-607-000



**MULCH-BLADES
NX15 95 CM**
196-561-000



**SNOW CHAINS
NX15 RD**
490-241-0022



CHAINS 18X9,5
196-898-699



AGRI TIRES
196-721A678



**KIT DOZER BLADE
NX15**
196-584-000



**QUICK HITCH
W/O DRIVE**
196-601-000



**QUICK HITCH
WITH DRIVE**
196-602-000



DRIVELINE RD
196-608-000



ADD-ON PARTS RD
196-610-000



**BLADE REMOVAL
TOOL**
6011-X1-0757



**OIL EXTRACTION
PUMP**
6011-U1-0001



PROTECTION COVER
2024-U1-0004



MO-JACK
6011-MJ-0004



CLIP LIFT
6031-X1-0013



**FUEL CAN CC
10L**
196-558-603



**OIL 10W30
1,0 L**
19A1905I603



**OIL 10W30
5,0 L**
19A1906I603

ACCESSORIES